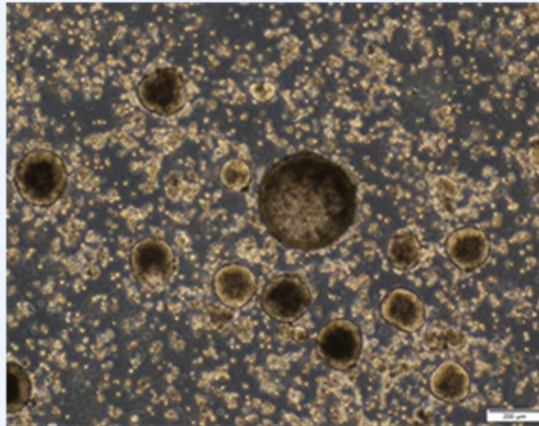


Product sheet

Cell line information			
Cell line name	RCOL004-3	Catalog No.	F_PDO_000098
Organism	Human (Homo Sapiens)		
Tissue	Metastasis of colorectal cancer to the brain		
Pathological diagnosis	Tubular adenocarcinoma		
Race / Sex / Age	Japanese / Female / 73		
Culture properties	Suspension		
Comments			

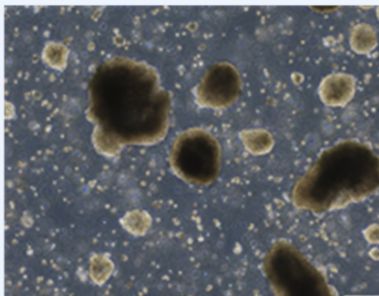
Culture information	
Medium	Cancer Cell Expansion Media plus (Fujifilm Wako Pure Chemical, Ltd.).
Antibiotics	Usage of antibiotics is not recommended, but 100 U/mL penicillin and 100 µg/mL streptomycin can be added if required.
Culture method	Thaw the vial at 37°C in a water bath, then seed tumor organoids into a 25 cm ² culture flask. Culture in a humidified incubator at 37°C with 5% CO ₂ in air. 50% to 80% volume of culture medium should be changed once or twice a week.
Subculture	Dilute the tumor organoids with medium. Split ratio of 1:1 is recommended.
Doubling time	5-9 days
Comments	Maintaining the 20-100 µL tumor organoid pellet in the 10 mL culture medium is recommended.

Phase contrast image

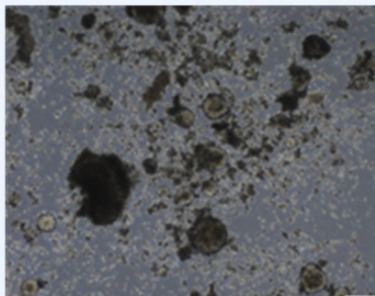


Conditions of tumor organoids after thawing

After thawing

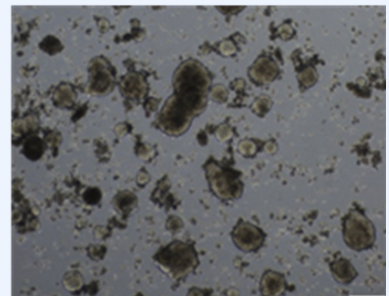


6 days after thawing



Tumor organoids were passed from one T25 flask to two T25 flasks.

9 days after thawing



Tumor organoids were passed from two T25 flasks to one T75 flask.