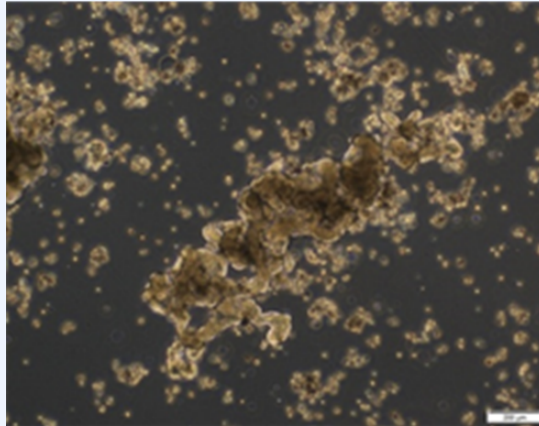


Product sheet

Cell line information			
Cell line name	RBIL001-2	Catalog No.	F_PDO_000012
Organism	Human (<i>Homo Sapiens</i>)		
Tissue	Metastasis of biliary tract tumors to the lung		
Pathological diagnosis	Tubular adenocarcinoma		
Race / Sex / Age	Japanese / Female / 70		
Culture properties	Suspension		
Comments			

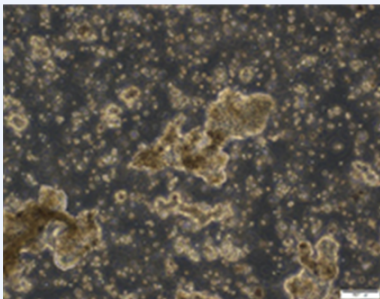
Culture information	
Medium	Cancer Cell Expansion Media plus (Fujifilm Wako Pure Chemical, Ltd.).
Antibiotics	Usage of antibiotics is not recommended, but 100 U/mL penicillin and 100 µg/mL streptomycin can be added if required.
Culture method	Thaw the vial at 37°C in a water bath, then seed tumor organoids into a 25 cm ² culture flask. Culture in a humidified incubator at 37°C with 5% CO ₂ in air. 50% to 80% volume of culture medium should be changed once or twice a week.
Subculture	Dilute the tumor organoids with medium. Split ratio of 1:1 is recommended.
Doubling time	6-9 days
Comments	Maintaining the 30–160 µL tumor organoid pellet in the 10 mL culture medium is recommended.

Phase contrast image

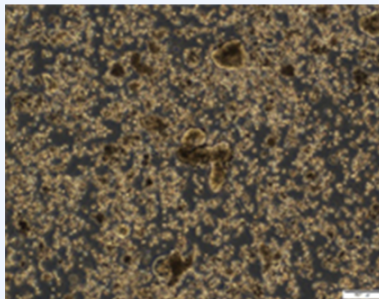


Conditions of tumor organoids after thawing

After thawing

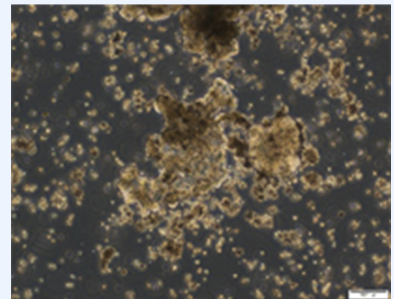


10 days after thawing



Tumor organoids were passed from one T25 flask to two T25 flasks.

18 days after thawing



Tumor organoids were passed from two T25 flasks to one T75 flask.